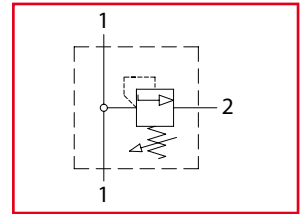




# VMDR1

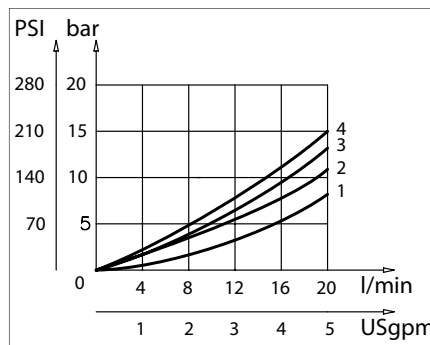
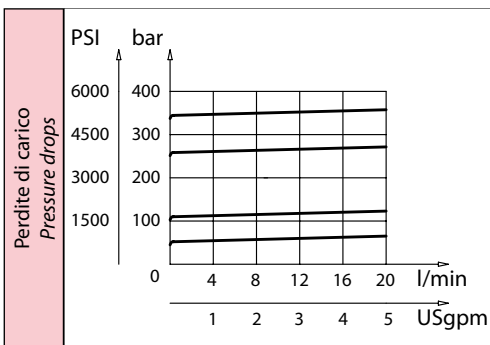
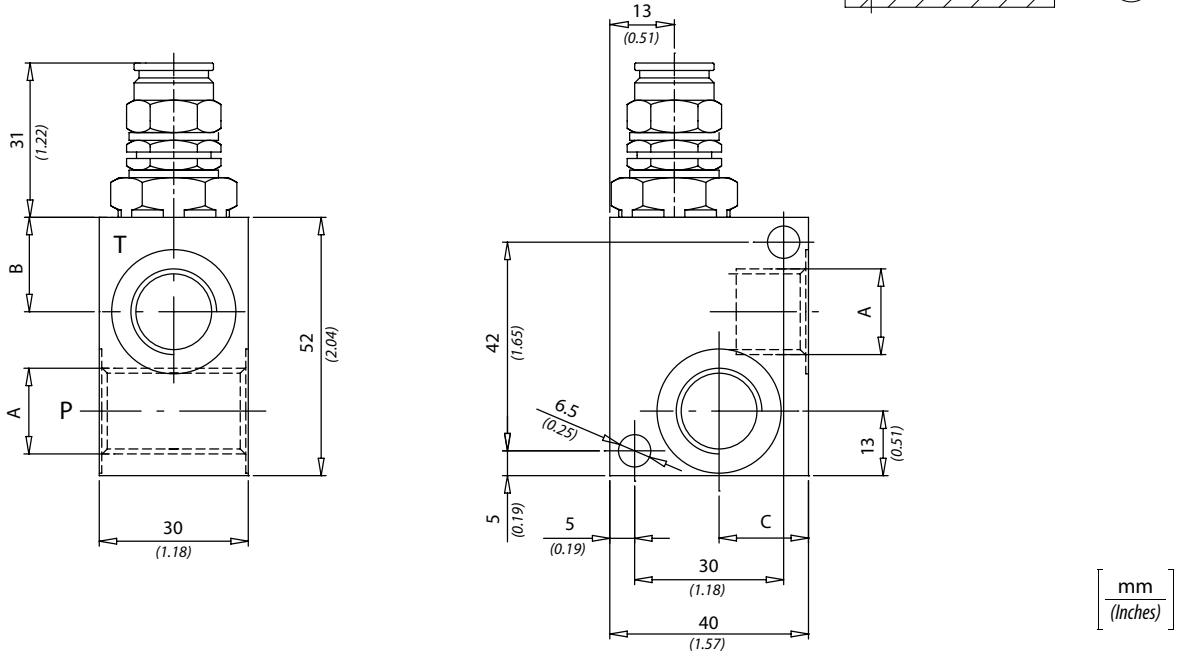
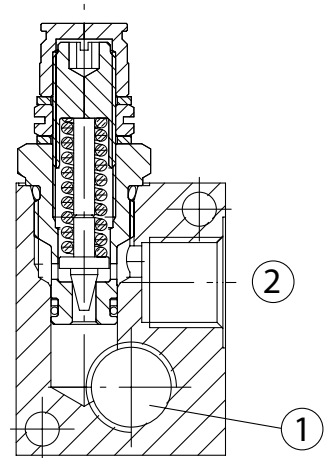
Valvole di massima pressione in linea  
Direct acting relief valves



**LEHENGOK, S. A.**



| Dati tecnici<br>Technical data              |  |
|---|--|
| Viscosità fluido<br>Fluid viscosity         | 10-500 mm <sup>2</sup> /s<br>45 to 2000 ssu (6 to 420 cSt) |
| Classe di contaminazione<br>Filtration      | ISO code 16/13<br>SAE class 4 or better                    |
| Temperatura fluido<br>Fluid temperature     | -20°C +80°C<br>-4°F +176°F                                 |
| Temperatura ambiente<br>Ambient temperature | -20°C +50°C<br>-4°F +122°F                                 |



| Caratteristiche tecniche<br>Technical performances |          |  |  |           |           |   |
|--|----------|--|--|-----------|-----------|---|
| Code<br>Code                                       | A        | Portata Max<br>Max flow<br>l/min - USgpm | Pressione Max<br>Max pressure<br>bar/PSI | B         | C         | Peso approssimativo<br>Approx weight<br>Kg / lb |
| VMDR1140   | BSPP 1/4 | 20 (5)                                   | 350 (5000)                               | 17 (0.67) | 20 (0.78) | 0,45 (0.99)                                     |
| VMDR1380   | BSPP 3/8 |  |  | 19 (0.75) | 18 (0.71) |   |

| Codice ordinazione<br>Ordering code |                        |   |                       |
|-------------------------------------|------------------------|---|-----------------------|
| <b>VMDR1 - X - Y - K</b>            |                        |   |                       |
| X                                   | Dimensione / Size      | Y | Regolazione / Setting |
| 140                                 | BSPP 1/4               | C |                       |
| 380                                 | BSPP 3/8               |   |                       |
| K                                   | Molla / Spring         |   |                       |
| 1                                   | 40 bar (600 PSI) max   |   |                       |
| 2                                   | 110 bar (1600 PSI) max |   |                       |
| 3                                   | 250 bar (3600 PSI) max |   |                       |
| 4                                   | 350 bar (5000 PSI) max |   |                       |